

Corbylands Road, Sidcup, DA15

Guide Price £400,000 - £425,000

🛏 2 🛏 1 🛏 2



Please Quote Ref TH0310 For All Enquiries - Guide Price £400,000-£425,000 - Charming two double bedroom Victorian terraced cottage (753 Sq.Ft) with delightful private garden, superbly situated within easy reach of Sidcup and New Eltham stations, schools and amenities. Offering characterful accommodation with modern interiors and quality finish throughout.

Key Features

- Please Quote Ref TH0310 For All Enquiries
- Popular Residential Location
- Two Inviting Reception Rooms
- Stylish Shower Room
- Easy Access Sidcup and New Eltham Stations
- Charming Two Bedroom Victorian Terraced House (753 Sq.Ft)
- Character Appeal and Modern Interiors
- Well Equipped Kitchen
- Gorgeous Landscaped Garden
- Close to Shops, Schools and Amenities

Corbylands Road

Approximate Gross Internal Area = 70.0 sq m / 753 sq ft

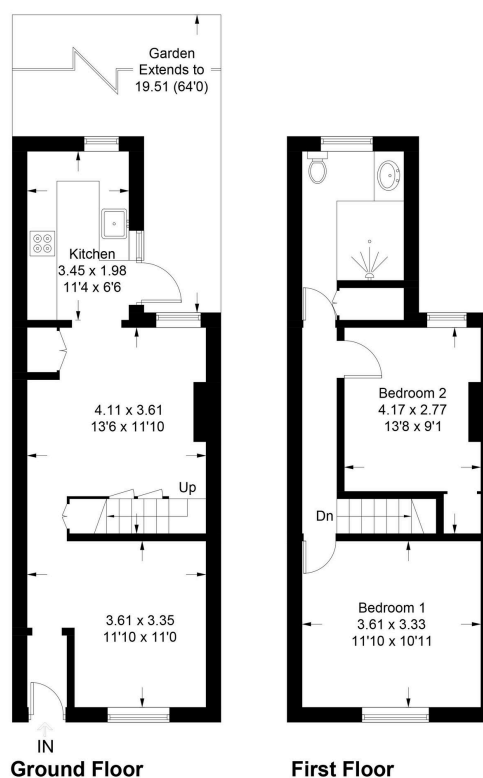


Illustration for identification purposes only, measurements are approximate, not to scale. Fourlabs.co © (ID1131730)